



Since 1991

REGULATED SYSTEMS, INC.
Industrial Automation Equipment

Automatic Part Feeders
Custom Machines
Handling Systems

Inspection Systems
Machine Tending Systems
Robotic Systems

POWER ROLLER CONVEYORS

16-6



Slave Chain Driven Section Shown

SYSTEM BENEFITS:

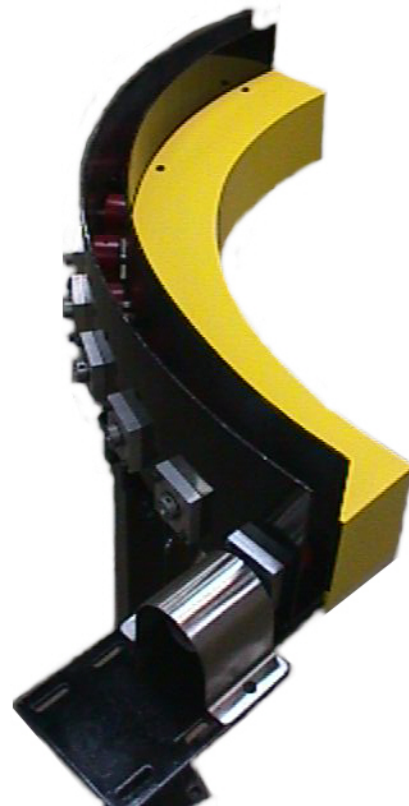
- Aids hazardous ergonomic considerations
- Allows increased production capacity
- Cuts part production labor cost
- Economical automation
- Maintains part quality
- Reduces costly manual labor
- Reduced floor space requirements
- Storage provides continued through put operation

FEATURES:

- Utilized for a wide range of applications.
- Used to transfer parts, parts on pallets, or even Dunnage.
- Used to move parts horizontally straight line or curved.
- Can be line shaft or slaved chain driven rollers.

AVAILABLE OPTIONS:

- Custom designed to suit application requirements.
- Turnkey controls or simple junction box for your logic.
- Various roller materials available from steel, stainless steel, plastics, to rubber and more.
- Plastic roller cover sleeves provide accumulation with out damaging the bottom of the parts or pallets being handled.
- Full roller or split rollers to suit application.
- Various drive packages 90 VDC, 120 VAC, 220 VAC, and 480 VAC.



90-Degree Curved Section Shown